

**EWAI**

## EWAI Products

GC-MS 3100/3200 Gas Chromatograph-Mass Spectrometer (Quadrupole)  
 GCxGC TOF MS 3300 Comprehensive Two-dimensional  
 Gas Chromatograph - Time of Flight - Mass Spectrometer  
 GC-MS 3110 Mobile Gas Chromatograph-Mass Spectrometer  
 GC-4000A/4100 Series Gas Chromatograph  
 EW-4400 Portable PID Gas Analyzer  
 LC-5500/5510/5520 High Performance Liquid Chromatograph  
 IC-2800 Ion Chromatograph  
 ICP-1000II Automatic ICP Spectrometer  
 ICP-7700 ICP Spectrometer  
 AA-7001/7003/7020/7050/7090 Atomic Absorption Spectrometer  
 AA-7003M/7030A Medical Atomic Absorption Spectrometer  
 AF-7500/7500B/7550 Atomic Fluorescence Spectrometer  
 XD-8010 Energy Dispersive X-Ray Fluorescence Spectrometer  
 XF-8100 Wavelength Dispersive X-Ray Fluorescence Spectrometer  
 CA-9000 Mobile Lab for Inspection  
 Coal Mine Analyzers  
 Data Processing Workstations  
 LIMS Laboratory Information Management System

### EAST & WEST ANALYTICAL INSTRUMENTS, INC.

Building A2, 6th Floor,  
 No. 5 Plaza, # 9 Che Gong Zhuang St,  
 Western District, Beijing, China, 100044  
 Phone: 86-10-8839 3500 8813 9575 8813 2417  
 Fax: 86-10-88393506  
 Website: www.ewai-group.com  
 Email: i.sales@ewai-group.com



## Product Catalogue

EAST & WEST ANALYTICAL INSTRUMENTS, INC.  
Simply Precise

# Company Introduction

## Simply Precise

Founded in 1988 by two senior engineers, East & West Analytical Instruments, Inc. (EWAI) has over 25 years of experience in providing a wide range of analytical solutions to fulfill its customer's needs.

From the beginning, innovation has always been at the core of our business. With the introduction of GC-MS 3100 in 2007, we were the first domestic manufacture to produce a commercial GC-MS system. Through continuous focus on research and development, we have expanded our product line to include GC, GC-MS, HPLC, AAS, AFS and XRF. Along the way, we have collected more than 30 patents and more than 100 awards and certificates. Our quality products provide solutions for applications ranging from mining to food safety.

EWAI is dedicated to maintaining a high quality of products and after-sale services. We have more than 30 branches in China and distributors in more than 20 countries. With our large and well trained service team, we can guarantee excellent service regardless of your location.

In 2013, EWAI and GBC Scientific Equipment Pty. Ltd. of Australia entered into a strategic partnership. This acquisition is a major step forward in our quest to become a diverse and internationally recognized manufacturer in the global analytical instruments industry. GBC adds to EWAI's already long product line with a variety of products and solutions including AAS, UV-Vis, ICP, ICP-ToF, and XRD.



## Our Slogan

Simply Precise

## Our Mission

Integrating the best ideas and methods of the East and the West to achieve excellence in the analytical instruments industry.

## Our Core Values

Decency	Teamwork
Dedication	Pioneering

# AAS Series

## AA-7050 Series Atomic Absorption Spectrometer



- The graphite furnace camera helps users locate injection probe, view sample status in graphite tubes and optimize furnace temperature programming.
- Graphite furnace gas saving mode prolongs the usage time of protection gas and therefore reduces the operating cost of the instrument.
- Graphite furnace double inner gas path permits an auxiliary gas in addition to the protection gas so as to improve the ashing process and obtain better results
- 6 coded lamp turret can automatically identify lamp element and record element lamp usage times.
- Deuterium lamp fine adjustment mechanism ensures perfect overlap of deuterium lamp and element lamp positions.
- Multi-element analysis function and AS-600 flame/graphite furnace autosampler are equipped to realize fully automated analysis of multiple elements.

## AA-7090 Series Atomic Absorption Spectrometer

- Flame and graphite furnace integrated AAS, with both deuterium lamp background correction and Zeeman background correction.
  - Graphite furnace of transverse heating, longitudinal Zeeman background correction through AC variable magnetic field.
- Variable magnetic field strength between 0.6 and 1.1 Tesla in 0.1 Tesla increments.
- Eight-lamp auto turret.
- Furnace viewing system.
- Coded lamp recognition.



## AA-7020 Series Atomic Absorption Spectrometer



- Carefully designed deuterium lamp background reduction and self-absorption background reduction allows for more accurate calibration.
- Additional features include enhanced auxiliary gas functionality, all-titanium constructed burner head with automated height adjustment, and automatic liquid trap protection.
- Graphite furnace optical control temperature measurement
- Automatic ignition through workstation
- Ethernet communication

## AA-7003/7001 Series Atomic Absorption Spectrometer



- Optical System
  - 1800 lines/mm diffraction grating
  - Wavelength range: 190 - 900 nm
  - Spectral bandwidth: Automatic switching between 5 settings: 0.1, 0.2, 0.4, 1.0, 2.0 nm
- Flame Analysis
- First domestic manufacturer to use an all-titanium nebulizer / combustion system that is anti-corrosion, anti-oxidation, withstands high temperatures, and has high durability.
- Graphite Furnace Analysis
  - Temperature range: room temperature - 3000 °C
  - Temperature program: Maximum 20 segment temperature program. Three heating segment modes: step, ramp, and hold.
  - Heating rate:  $\geq 2000$  °C/sec.

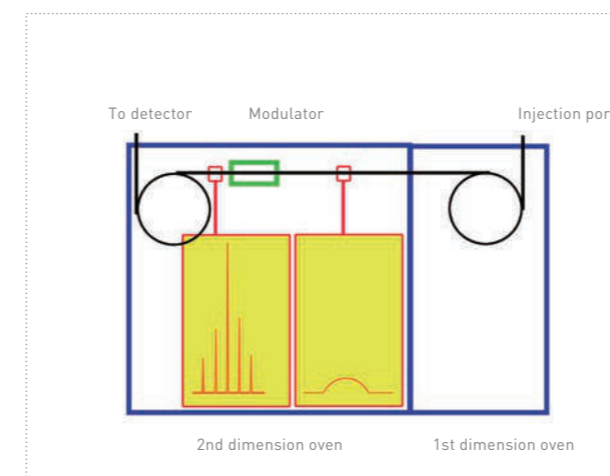
## GC-MS Series

### GCxGC TOF MS 3300 Comprehensive Two-dimensional Gas Chromatograph – Time of Flight - Mass Spectrometer

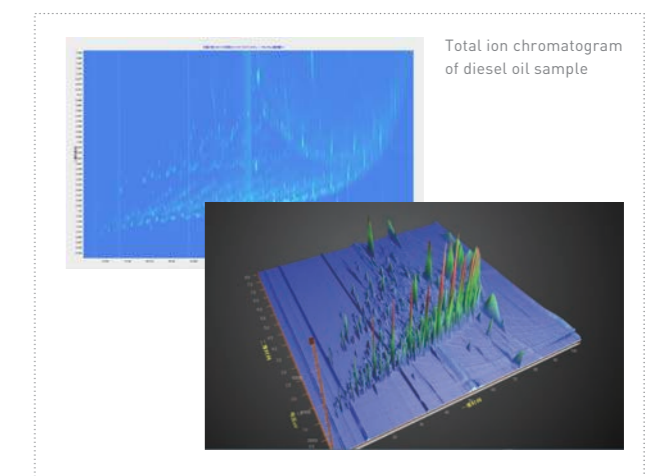


- Eliminate modulator interference  
GC x GC four-vent modulator eliminates the interference of thermal modulation on column oven.
- Double-column oven with independent temperature control  
Double-column oven with independent temperature control provides flexibility, suitable for a wide range of applications.
- The time of flight mass detector features high resolution, high sensitivity, high collection speed and selective removal of ion background.
- Hardware, software and databases are all integrated to provide a complete analysis solution of all components and trace organic compounds in complex matrix solutions.
- Chromatograph, modulators and mass spec electrical components are combined together for integrated system operation and control.

#### Column oven diagram



#### Analysis of diesel oil sample





## GC-MS Series

### GC-MS 3200 Gas Chromatograph - Mass Spectrometer (Quadrupole)



The adjustable positive chemical ionization (PCI) feature improves the overall performance of the system while simultaneously expanding the instrument's applications.

### GC-MS 3100 Gas Chromatograph - Mass Spectrometer (Quadrupole)



- Features an EI electron bombardment ion source with an independent heating system.
- Mass range: 1.5 - 1024 amu
- Detector: High energy dynode (HED) electron multiplier

### GC-MS 3110 Vehicular Gas Chromatograph - Mass Spectrometer



- This instrument is designed for on-site emergency response.
- Mass range: 1.5 - 800 amu

## GC Series

### GC-4100 Series Gas Chromatograph



Up to ten gas paths can be controlled using EPC flow or pressure control, including the carrier gas, ignition gas, auxiliary gas, split flow and makeup gas, among others.

### GC-4000A Series Gas Chromatograph



Five detectors to choose from: thermal conductivity detector (TCD), flame ionization detector (FID), flame photometric detector (FPD), nitrogen phosphorus detector (NPD), electron capture detector (ECD).

### EW-4400 Portable Photo Ionization Gas Analyzer



Light weight and flexible, this instrument is especially suited for on-site analysis at environmental disasters and emergencies.

## AFS Series

### AF-7550 Dual-Channel Hydride Generation - Atomic Fluorescence Spectrometer



- Coded hollow cathode lamp  
Coded hollow cathode lamp allows the instrument to automatically recognize the element lamp, and monitor the usage of each lamp. Three-dimensional lamp position adjustment allows the lamp beam to be focused to the optimal point.
- Economical analysis, with significantly reduced argon consumption
- High performance autosampler, with automatic on-line dilution

### AF-7500 Dual-Channel Hydride Generation - Atomic Fluorescence Spectrometer



- The AF-7500 can analyze two elements simultaneously. It can be used to detect low and trace concentrations of elements including As, Sb, Bi, Se, Sn, Pb, Ge, Te, Zn, Cd, and Hg.
- It can be updated for elemental speciation analysis of As, Hg, Se, Sb, etc.

## XRF Series

### XD-8010 Energy Dispersive X-Ray Fluorescence Spectrometer



- Three different types of X-ray radiation safety systems, software interlocks, hardware interlocks, and mechanical interlocks, will completely eliminate radiation leakage under any working condition.
- The XD-8010 provides rapid elemental analysis of elements from S to U, with adjustable analysis times.
- Up to 15 combinations of filters and collimators. Filters of various thicknesses and materials are available, as well as collimators ranging from  $\Phi 1$  mm to  $\Phi 7$  mm.

### XF-8100 Wavelength Dispersive X-Ray Fluorescence Spectrometer



- The XF-8100 uses a peak characteristic detection method to determine peak area instead of a simple integration.
  - A unique Aluminum channel's splitter optic improves the diffraction efficiency of the Aluminum K-lines 2 to 3 times.
- The integrated detector module contains the proportional counter tube, high-voltage circuitry, and signal amplification circuitry all in one compact design.

## HPLC Series

### LC-5520 High Performance Liquid Chromatograph



- Based on the solid and durable design of the LC-5510 pump, the LC-5520 pump features an improved pump drive system. This improvement results in a smoother transition between the two pump drivers during the infusion process.
- Features a unique refractive index suppression technology, which when used in conjunction with a long 40 mm optical path cell, greatly improves the detection sensitivity, and reduces the dynamic noise.

### LC-5510 High Performance Liquid Chromatograph



- Features a double parallel piston pump with a stable flow rate and high-precision control, and high-pressure infusion flow of up to 50 mL/min.
- Variable wavelength UV detector, firmware controlled wavelength scanning.
- Patented pulse buffering technology ensures a stable flow rate.
- Can be equipped with a greater luminescence detector or a fluorescence detector.

## Ion Chromatograph

### IC-2800 Ion Chromatograph



- A unique design with a self-regenerating micro-membrane suppressor that features a large suppression capacity, low background conductivity, low dead volume, low time to stability, high reproducibility, along with ease of operation and maintenance.
- The full PEEK flow system prevents metal contamination, can withstand high pressures, is resistant to acid, alkali and is compatible with organic solvents.
- The detector is a thermal conductivity detector with a digital temperature control system that features high sensitivity, stability, accuracy and reliability.

## EWAI Accessories

AS-200 AAS Flame Autosampler



AS-500 AAS Graphite Furnace Autosampler



AS-600 AAS Flame/Furnace Autosampler



EW-320AC Air Compressor



EW-900CH Water Cooling System



HG-01 Hydride Generator



AS-2902 GC/GC-MS Autosampler



High Purity Hydrogen Generator



AS-401 HPLC Autosampler



Automatic Air Generator



DM-100/DM-101 Online Degasser



More accessories on our website  
[www.ewai-group.com](http://www.ewai-group.com)